

This week, we have been learning to read and spell words containing **mb** saying /m/.



Level 6

The /m/ Sound Family

mb

The spelling pattern **mb** saying /m/ usually appears at the end of a word. We don't say the /b/ sound in words that end in **mb**.

lamb
comb
thumb

m

m is the most common spelling of the /m/ sound and can appear anywhere in a word.

jam
crumble
meat

Common Exception Words

We have been learning to spell the common exception words **famous** and **shoe**.

Grammar

If you are not sure what a word means, you can look up the word in a dictionary and read the definition.

Remember, the words will be in alphabetical order.

Word List

lamb

climb

limb

thumb

comb

bomb

numb

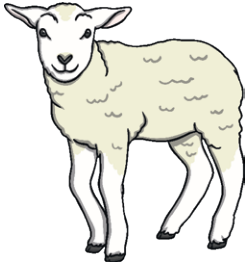
crumb

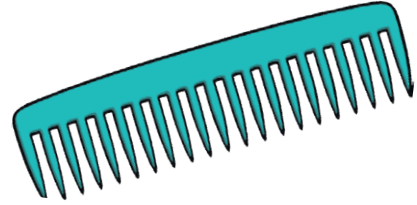
mb saying /m/ Words

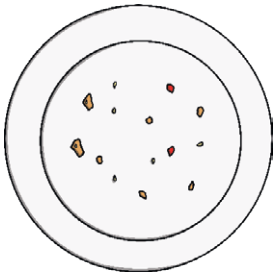


Level 6

Look at the picture and write the correct word to match.













Can you write a sentence using one of the **mb** words?
